

DROPLET PRECAUTIONS

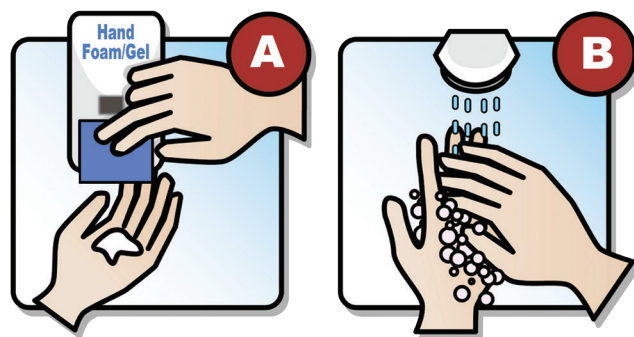
Bed #

Families and visitors:



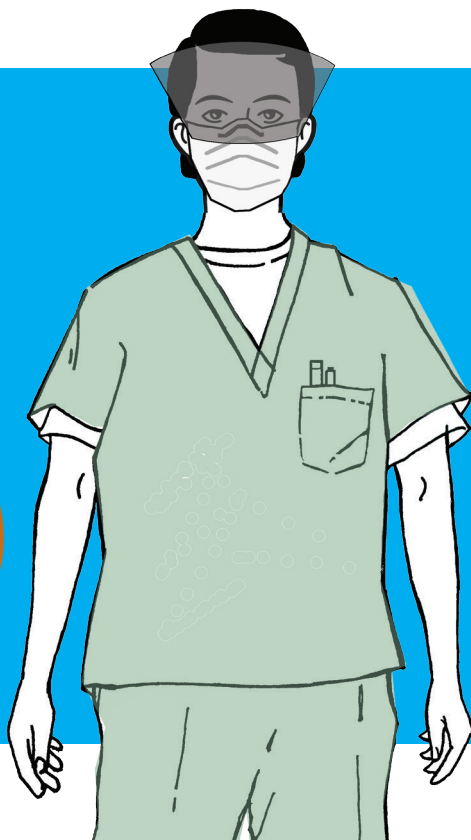
Please report to staff before entering

Clean hands before entering and when leaving room



Clean hands with
A) hand foam/gel or **B)** soap and water

Staff:



**KEEP
SIGN POSTED
UNTIL ROOM
CLEANED**
HOUSEKEEPER will
remove sign after
"Discharge"
cleaning

Required:

- Point of Care Risk Assessment**
- Procedure mask with eye protection**
When within 2 metres of patient
- Keep 2 metres between patients**

For more information, refer to the Infection Control Manual.